



Integration Tools and Software Solution

MessageIt – v 4.00.00

Installation and Implementation





Integration Tools and Software Solution

CONTENTS

INTRODUCTION.....	3
WHAT DOES MESSAGEIT DO?	3
MESSAGEIT ARCHITECTURE OVERVIEW	3
BENEFITS OF MESSAGEIT	4
INSTALLATION	5
INSTALL THE AS/400 PART.....	5
PC PART INSTALLATION PREREQUISITES	7
INSTALL THE PC PART	9
AS/400 DEFINITIONS AND ACTIVATION	9
PC DEFINITION AND ACTIVATION	11
MESSAGEIT MAIN MENU AND COMMAND DESCRIPTION.....	18
MAINTENANCE COMMANDS.....	20
MESSAGEIT PC SERVER	21



Integration Tools and Software Solution

Introduction

What does MessageIt do?

MessageIt is a simple to install and configure tool that allow you send spool file created originally on the AS/400 via E-mail, Fax and SMS.

MessageIt has supplementary like:

- Catalog and archive spool files (as PDF or Image) in to a network directory.
- Combine data base rows into preprinted forms and print them via network printer.

Those abilities will not be discuss in this document.

for more information please address us via mail at sales@vrtech.biz

MessageIt architecture overview

MessageIt construct from two parts the AS/400 and PC:

- ✓ The AS/400 part includes the Spool intercept server.

```
MIMENU                                MessageIt/400

Select one of the following:

Administration
  1. Add Out Queue to MessageIt          29. Display MI Waiting Files 4 Send
  2. Remove Out Queue From MessageIt     31.initialize MI Servers
10. Start MessageIt Server              41.Add Mail/Fax/SMS address to spool
11. Stop MessageIt Server

20. Work with MI MSGQ
21. Clear MI MSGQ

Maintenance
89. Work with MI Global Parameters

25. Display MI Log
26. Clear MI Log

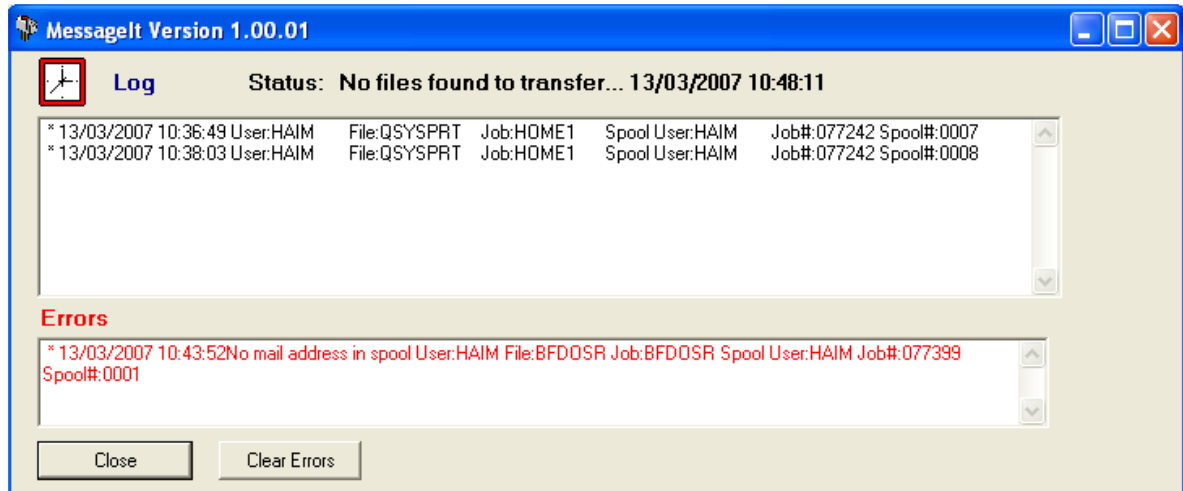
28. Display MI Return Mail File
Selection or command
===> █

F3=Exit  F4=Prompt  F9=Retrieve  F12=Cancel
F13=Information Assistant  F16=AS/400 main menu
```



Integration Tools and Software Solution

- ✓ The PC part includes the E-mail dispatcher.



Benefits of MessageIt

- ✓ Simple to install and configure..
- ✓ MessageIt free you from integration agonize... just assign AS/400 OUTQ and you are ready. All spool file will be send to there destinations.
- ✓ MessageIt free you from the need to define POP and SMTP protocols on the AS/400 and expose it to external hazards.



Integration Tools and Software Solution

Installation

Install the AS/400 part

2.1.1. At the AS/400:

- 2.1.1.1. Insure FTP server is active on the AS/400
if not Start it Via AS/400 command **STRTCPSVR *FTP**
- 2.1.1.2. Insure that FTP protocol is not suspended via
Firewalls or IP filtering.

2.1.2. At the PC:

- 2.1.2.1. Obtain MessageIt installation from our web site:
<http://www.vrtech.biz/MessageIT.htm>
- 2.1.2.2. UNZIP the file MessageIT.ZIP into PC folder
(recommended C:\TEMP)
Two files are included in the ZIP file
LoadPRD.BAT and vr8.savf
NOTE:
This PC must be capable of performing FTP to AS/400.
- 2.1.2.3. Start PC prompt (Start→CMD)
- 2.1.2.4. At the DOS prompt:
 - 2.1.2.4.1. *CD \TEMP*
 - 2.1.2.4.2. *LoadPRD.BAT AS400User AS400Password VR8 IP*

Where:

- AS400User – The AS/400 user to be use in the FTP uploading.
(It is advisable to use power user like QSECOFR to prevent
security problems while uploading procedure)
- AS400Password – The AS/400 password.
- VR8 – MessageIt product code.
- IP – the IP of the target AS/400.

Press Enter.

- 2.1.2.4.3. Installation messages will appear on
screen.

- 2.1.2.4.4. At the end of the installation a screen similar to the following will appear:

```
550 1 objects restored. 0 not restored to QGPL..
ftp> close
221 QUIT subcommand received.
ftp> bye
*****
* To proceed with the installation: *
* 1. Start Emulation sesison Using QSECOFR user profile *
* 2. At the AS/400 command prompt apply the command: *
* CALL PGM(QGPL/VR8I) PARM(*SAUF QGPL) *
*****
C:\Temp>
```



Integration Tools and Software Solution

2.1.3. At the AS/400:

- 2.1.3.1. Sign on as QSECOFR or QSECOFR class.
- 2.1.3.2. If the product already installed on your system please insure to stop MessageIt server by selecting *STRMI -> Opt 11*
- 2.1.3.3. at the command line type:
*CALL PGM(QGPL/VR8I) PARM(*SAVF QGPL)*
and press Enter.
- 2.1.3.4. The installation procedure will end with the message:
"New release of MessageIt successfully installed"
- 2.1.3.5. Proceed to the product menu by typing the command *STRMI*



Integration Tools and Software Solution

PC part installation prerequisites

Before you start the installation, make sure that all software requirements are satisfied.

MessageIt runs on Windows 98, Windows 2000 and Windows XP.

Before you install MessageIt you need to install Microsoft .Net Framework 1.1. In most of the cases the installation will tell you if you need to install it and will show the link to the site of Microsoft to download it.

If for some reason installation indicates an error did not detect that Microsoft .Net Framework 1.1. is missing you can download it from following site:

<http://www.microsoft.com/downloads/details.aspx?familyid=262D25E3-F589-4842-8157-034D1E7CF3A3&displaylang=en>

Also you need to install Microsoft Visual J# .Net, you can download it from:

<http://www.microsoft.com/downloads/details.aspx?familyid=e3cf70a9-84ca-4fea-9e7d-7d674d2c7ca1&displaylang=en>

On the PC station should be installed Client Access of IBM and configured to the AS/400 machine.

For Mail module:


1. Define user and password for SMTP and POP3 account.


For Fax Module:

1. Install Microsoft Fax
 - a. Enter Control Panel
 - b. Enter Add/Remove programs
 - c. Click Add/Remove Windows Components
 - d. Select Fax Services



Integration Tools and Software Solution




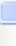



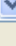
Windows Components Wizard 

Windows Components 

You can add or remove components of Windows XP.

To add or remove a component, click the checkbox. A shaded box means that only part of the component will be installed. To see what's included in a component, click Details.

Components:

<input checked="" type="checkbox"/>	 Accessories and Utilities	18.0 MB	
<input checked="" type="checkbox"/>	 Fax Services	3.8 MB	
<input checked="" type="checkbox"/>	 Indexing Service	0.0 MB	
<input checked="" type="checkbox"/>	 Internet Explorer	0.0 MB	
<input checked="" type="checkbox"/>	 Internet Information Services (IIS)	13.5 MB	

Description: Allows fax to be sent and received

Total disk space required: 76.9 MB
Space available on disk: 5679.2 MB

[Details...](#)

[< Back](#) [Next >](#) [Cancel](#)



Integration Tools and Software Solution

Install the PC part

- 2.2. Start the SETUP.EXE program on the PC.
Follow the instruction on the screen.

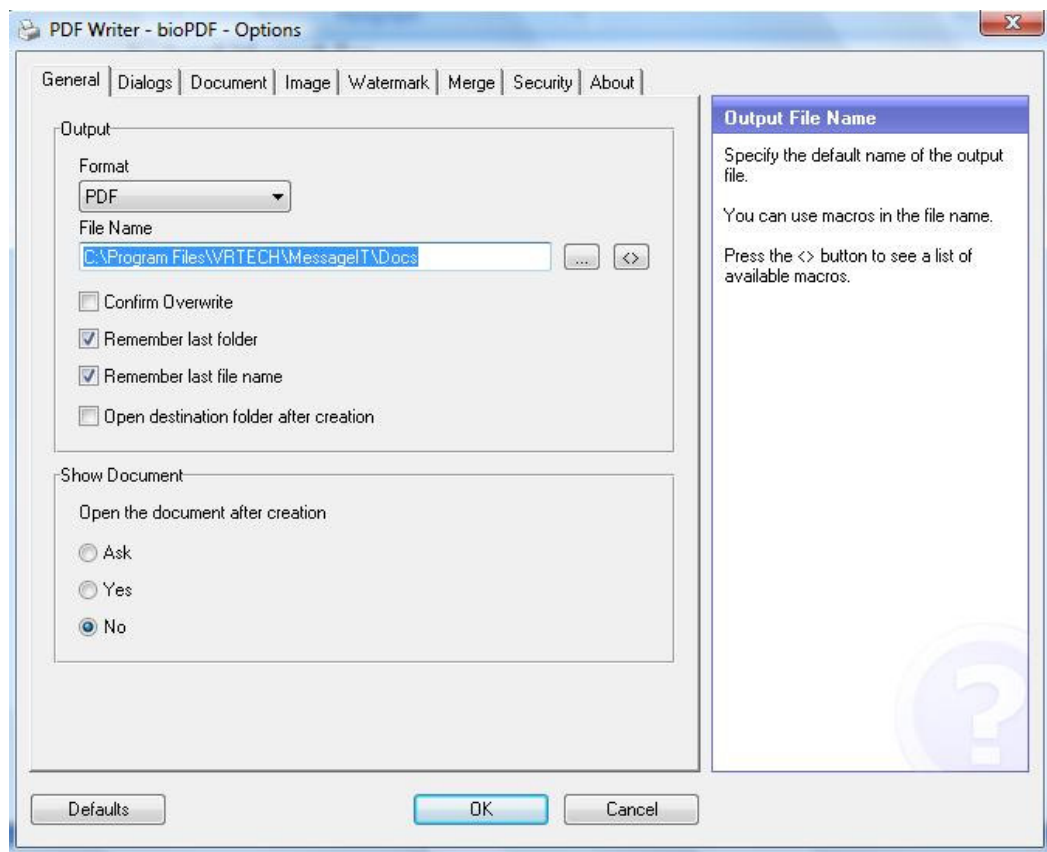
Configure bioPDF (PDF Writer)

When the setup will be completed you will have in Printer and Faxes a printer called *PDF Writer -bioPDF*.

You need to configure the bio PDF options:

1. Open bioPDF options: Start→ All Programs→ bioPDF→ PDF Writer→ Options

A screen similar to the following will appear:



2. In the 'General' tab , in 'Output' frame :

- in 'File Name' field write 'C:\Program Files\VRTECH\MessageIT\Docs\AttDoc.pdf'

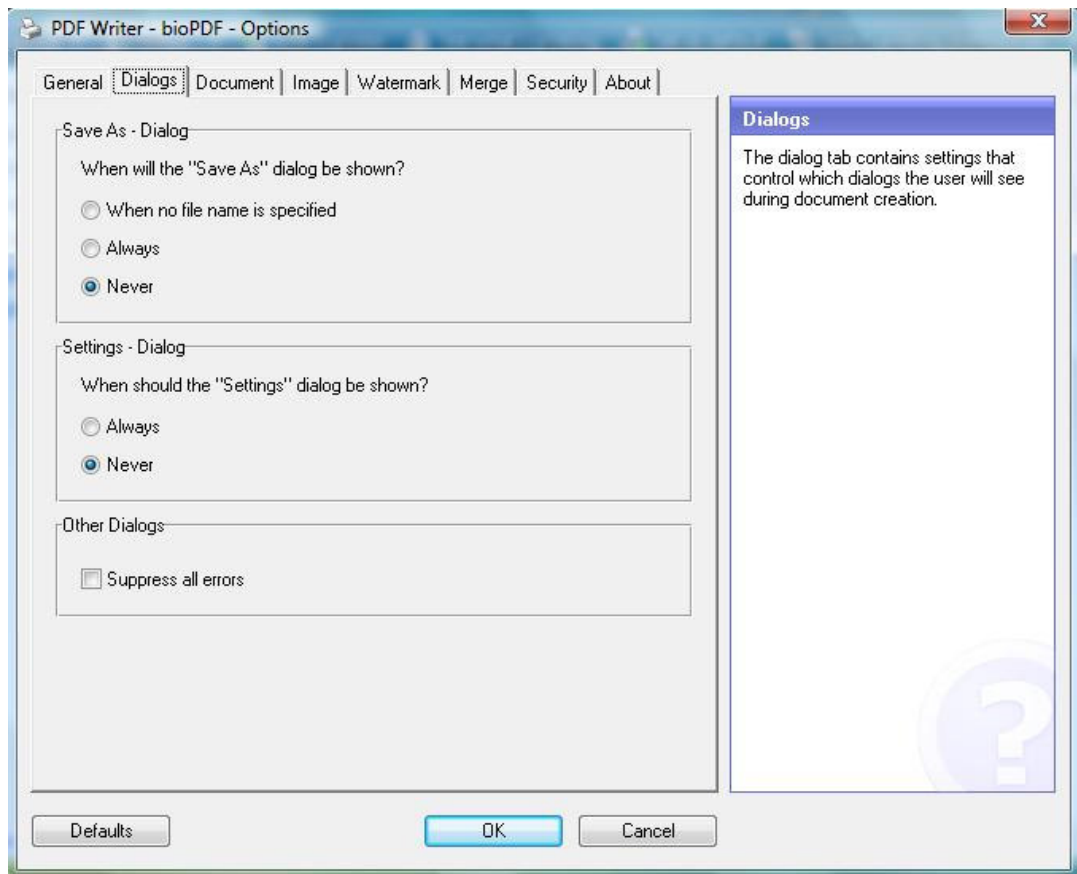
- uncheck the 'Confirm Overwrite' option



Integration Tools and Software Solution

-check 'Remember last file name' option

3. In the 'Show Document' frame choose option 'No'.
4. In the 'Dialogs' tab, in 'Save As- Dialog' frame choose the option 'Never'.



5. In the 'Settings- Dialog' frame choose the option 'Never'.
6. Click 'OK'.
7. Go to **Printer and Faxes** and change printer name to MessageIT

AS/400 Definitions and activation

- 2.2.1. Start MessageIt menu **VR8/STRMI**
- 2.2.2. Add a out queue name to be served by the MessageIt server
select option 1 from MessageIt menu or use the command **ADDMIOUTQ** to add new out queue to the list of the served out queues.
- 2.2.3. Edit the file VR8DTA/MIRMAILPF via **STRDFU** or other editing tool to add return to mail address information.
Where the file fields are:
USER NAME: the name of the AS/400 user that issuing the spool file.



Integration Tools and Software Solution

RETURN E-MAIL TO-USER: the qualified E-mail address that will be used to return the mail message if not delivered to recipient.

The value *DFT can be used in the USER NAME field to indicate that all return mail that do not have specific direction in this file will be send to this default e-mail address.

2.2.4. Start the MessageIt server

Interactively – select option 10

Batch – submit the command:

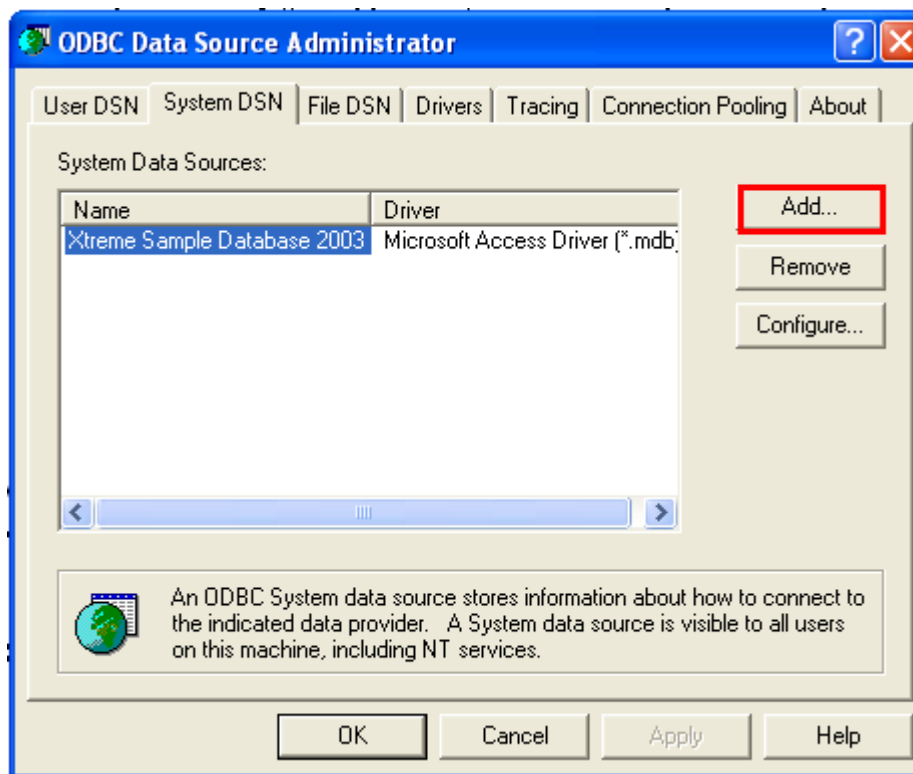
VR8/MNGMISRV ACTION(*START) DEBUGMODE(*NO)

PC Definition and activation

2.3. Add DNS definition in ODBC for you AS/400 machine

2.3.1. Enter Control Panel → Administrative Tools → Data Sources (ODBS)

2.3.2. Press **System DSN** tab and press **Add**



2.3.3. Select Client Access ODBC driver and press Finish

2.3.4. Enter **MessageIt** in Data Source Name field and select your AS/400 machine.



Integration Tools and Software Solution

iSeries Access for Windows ODBC Setup [?] [X]

General | Server | Packages | Performance | Language | Catalog | Translation | Diagnostic

Data source name:
MessageIT

Description:
iSeries Access for Windows ODBC data source

System:
AS400 [v] [Connection Options...]

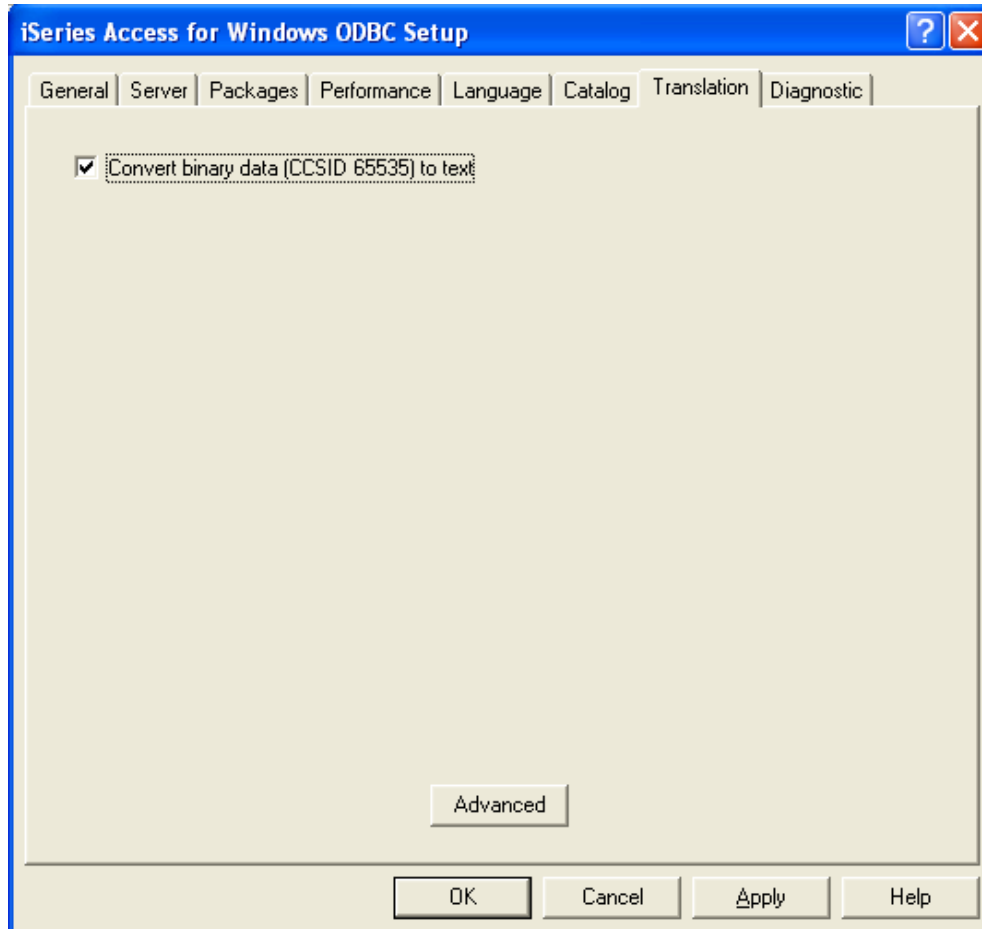
1234567890
01234567890
01234567890

OK Cancel Apply Help



Integration Tools and Software Solution

2.3.5. Press Translation tab and check Convert binary...



2.4. Press OK and OK

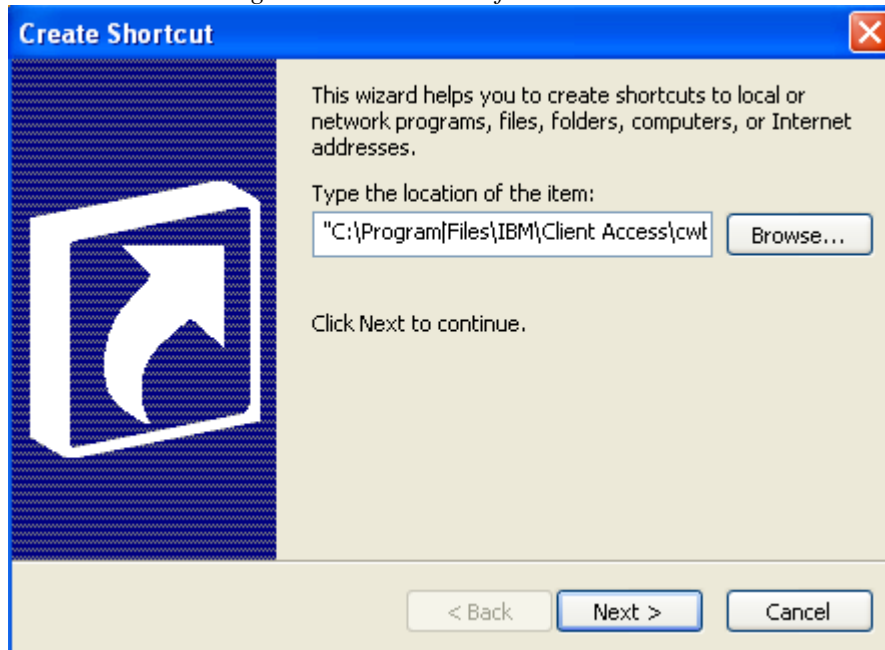
2.5. Make sure that regional settings are correct – in all tabs you can see your local language defined correct.

2.6. Right click on desktop → New → Shortcut

2.6.1. Type "**C:\Program Files\IBM\Client Access\cwblogon.exe**" [AS/400 IP] /u [User Name] /p [Password] in location field

(sample:

"C:\Program Files\IBM\Client Access\cwblogon.exe" 131.131.118.25 /u MyUserName1 /p MyPassword1)



2.6.2. Click Next and Finish

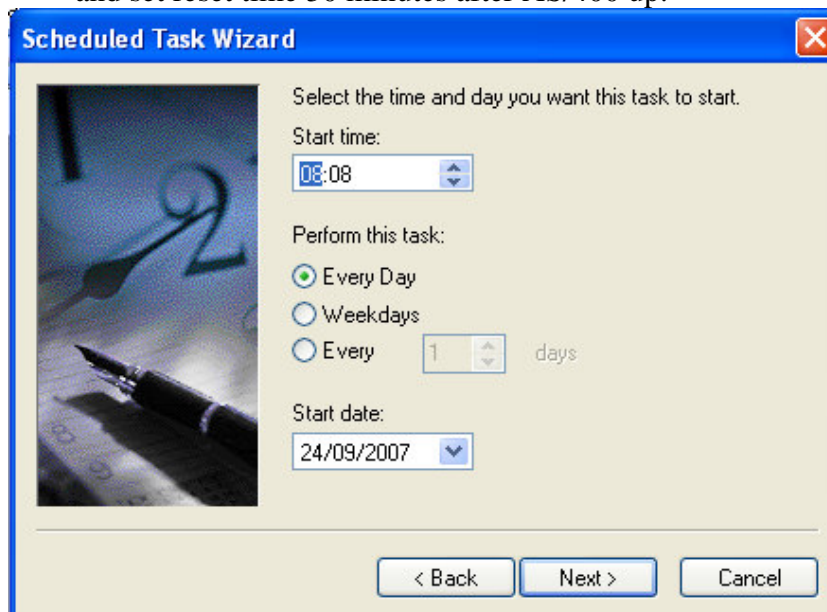
2.6.3. Add this shortcut to the **Startup**
(**Start**→**All Programs**→ **double-click on 'Start Up' Folder**)

2.7. Enter Settings→ Control Panel → Scheduled Tasks

2.7.1. Click **Add Scheduled Task** and **Next**

2.7.2. Click **Browse** and select C:\program files\vrtech\MessageIT\ResetMessageIT.exe

2.7.3. Select how often you reset your AS/400 machine and set reset time 30 minutes after AS/400 up.



2.7.4. Enter User Name and Password that log on this computer

2.7.5. Click **Finish**



Integration Tools and Software Solution

2.8. Update MessageIt configuration File

2.8.1. Open mi.xml file in the installation folder

```
= <content>
<system SYSTEM_NAME="121.121.30.18" DNS="MessageIT" USER_NAME="user1"
  PASSWORD="12345" />
<inbox_def FROM="yana@vrtech.co.il" USER="haim@vrtech.co.il" PASS="56789"
  POP3ACCOUNT="abc.mymailserver.net.il" SMTP="abcde.mail.net.il" Authenticate="0" />
<general MODE="" CDO="YES" DEST_PATH="" INI_FILE="ini_temp.ini" />
<spool_defs SearchForMailAddressFromLine="1" SearchForMailAddresToLine="50"
  SearchForMailTagE="EMAIL:" SearchForMailTagH="דואר:" SearchForMailValueRelativeToTag="Left"
  />
<Subject_text SearchForSubjectTagE="SUBJECT:" SearchForSubjectTagH="נושא:" />
<print FileName="c:\HSM\AttDoc.pdf" Subject="MessageIt" PrinterName="MessageIT" Logo=""
  Logo_cols="1500" Logo_rows="10" delete_mail="" />
<mail_err err1="ILLEGAL" err2="האלקטרוני לא קיים" err3="recipient could not be found" err4="did not
  reach the following" err5="e-mail account does not exist" err6="לא ניתן להעברה" err7="Illegal
  host" err8="Delivery to the following recipients failed" err9="Your message cannot be
  delivered to the following recipients" />
<debug ShowBuffer="" ShowMail="" SendTo="" DontClean="YES" />
<Fax ActivateFax="" SearchForFaxTagE="FAX:" SearchForFaxTagH="פקס:" Retries="3" Delay="5" />
<WordIt DocumentPath="" TemplateDirectory="" />
</content>
```

2.8.2. Enter **System Name** or IP address of your AS/400 machine

2.8.3. Enter **DNS** name (the name that added in ODBC for AS/400 machine, paragraph 2.6.4.) , **USER_NAME** name and **Password** access for your AS/400 machine.

2.8.4. For Mail option:

2.8.4.1. Enter **FROM** – mail account to send mails from

2.8.4.2. Enter **USER** and **PASS** of Inbox

2.8.4.3. Enter **POP3ACCOUNT** and **SMTP** address

2.8.4.4. Enter **Authenticate** = “1” if your SMTP requests authentication. If not leave default (0).

2.8.4.5. Enter first row to search mail address in **SearchForMailAddressFromLine** tag

2.8.4.6. Enter last row to search mail address in **SearchForMailAddresToLine** tag

2.8.4.7. Enter Mail Tag for English mail in **SearchForMailTagE** tag

2.8.4.8. Enter Mail Tag for Hebrew mail in **SearchForMailTagH** tag

2.8.4.9. Enter Subject Tag for English mail in **SearchForSubjectTagE** tag

2.8.4.10. Enter Subject Tag for Hebrew mail in **SearchForSubjectTagH** tag

2.8.4.11. Enter subject you want to be in the mail in **Subject** tag

2.8.4.12. If you want only create PDF/TIFF files without sending them to the mail update value of **MODE** tag to **MODE="Spool2File"**.

2.8.4.13. If you want only send PDF/TIFF files to the mail update value of **MODE** tag to **MODE="MailFax"**



Integration Tools and Software Solution

2.8.5. For Fax option:

In **Fax** line:

- 2.8.5.1. Enter **ActivateFax="YES"**
- 2.8.5.2. Enter Fax Tag for English fax in **SearchForFaxTagE** tag
- 2.8.5.3. Enter Fax Tag for Hebrew fax in **SearchForFaxTagH** tag
- 2.8.5.4. Enter **Retries** value – how many times MessageIt will try to send fax to the destination.(default value – 3)
- 2.8.5.5. Enter **Recipient ="Yes "** if fax requires recipient parameter

If you want only send PDF/TIFF files to the fax

In **General** line:

- 2.8.5.6. Enter **MODE="MailFax"**
- 2.8.5.7. Enter full path of fax files in **FAX_PATH**
- 2.8.5.8. For additional fax paths enter these paths in **Fax_Dir** line

2.8.6. For WordIT option:

In **WordIt** line:

- 2.11.6.1. Enter full path where created documents will be save in **DocumentPath** tag
- 2.11.6.2 . Enter full path of Word template files in **TemplateDirectory** tag

2.8.7. For Signature option:

In **Signature** line:

- 2.11.6.1. Enter label before which signature will be placed in **SLabel** tag
- 2.11.6.2 . Enter full path to the folder of signatures in **SPath** tag.
- 2.11.6.2 . Enter X location of a signature in **SXLocation** tag.

2.8.8. General Definitions

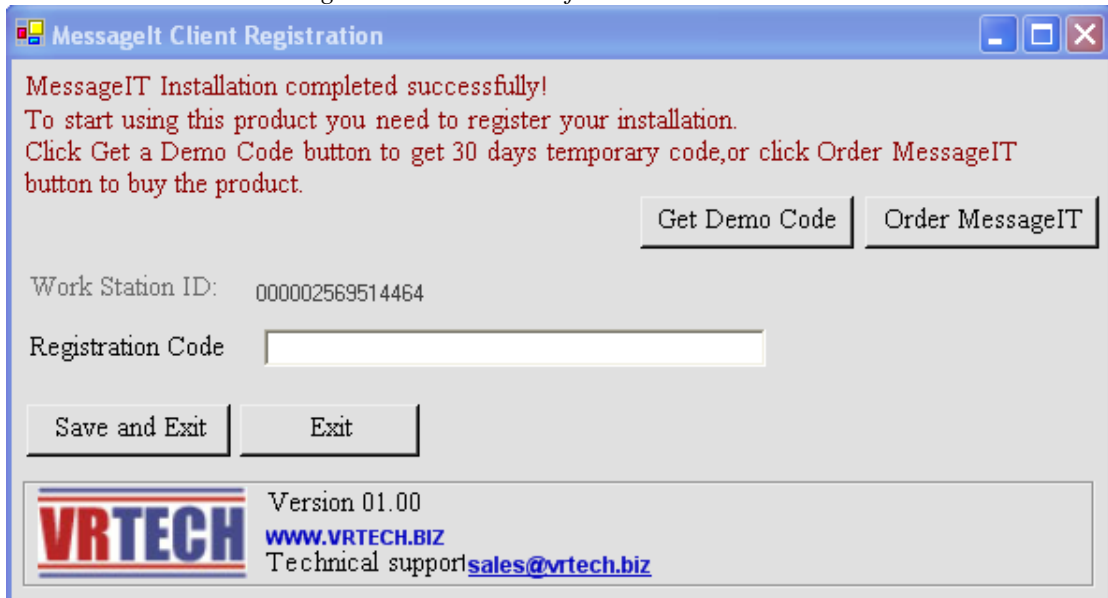
- 2.8.8.1. Enter general **Subject** of the mail or fax

2.9. Start MessageIT PC server by clicking the shortcut in the desktop.

2.10. Enter you license key in the following window



Integration Tools and Software Solution



- 2.11. If you have purchased MessageIT send your local distributor the Workstation ID and he will provide you permanent registration code.



Integration Tools and Software Solution

MessageIt main menu and command description

2.12. The product menu.

To start the product Menu, type at the AS/400 command:

VR8/STRMI

2.13. MessageIt Menu

```
MIMENU                                MessageIt/400

Select one of the following:

Administration
  1. Add Out Queue to MessageIt          29. Display MI Waiting Files 4 Send
  2. Remove Out Queue From MessageIt    31.initialize MI Servers
 10. Start MessageIt Server              41.Add Mail/Fax/SMS address to spool
 11. Stop MessageIt Server

 20. Work with MI MSGQ
 21. Clear MI MSGQ

 25. Display MI Log
 26. Clear MI Log

 28. Display MI Return Mail File
Selection or command
===>

F3=Exit  F4=Prompt  F9=Retrieve  F12=Cancel
F13=Information Assistant  F16=AS/400 main menu
```



Integration Tools and Software Solution

Administration Commands

the commands in this section allow administrate the product.

2.13.1.1. Add Out Queue to MessageIt (ADDMIOUTQ)

Add an AS/400 out queue to be served by MessageIt server
(all spool files in this queue will be submitted as attachment via E-mail)

Where:

OUTQ – The name and library of the out queue.

SNDSPLVIA – The activity that will process spool files in this OUTQ.

*MAIL - send spool file via e-mail.

*FAX - send spool file via fax.

*SMS - send spool file via SMS.

2.13.1.2. Remove Out Queue From MessageIt (ADDMIOUTQ)

Remove an AS/400 out queue from being served by MessageIt server where:

OUTQ – The name and library of the out queue.

2.13.1.3. Start MessageIt Server MNGMISRVACTION(*START))

Use this command to start the MessageIt server.

The server is responsible of intercepting the spool file from MessageIt out queue

and signal the PC server that spool files are ready to by send via E-mail.

Where:

ACTION – The type of action required from the server (*START)

DEBUGMODE – Allow verbose messaging from the server often use for debug purposes.

2.13.1.4. Stop MessageIt Server MNGMISRVACTION(*STOP))

Use this command to stop the MessageIt server.

Where:

ACTION – The type of action required from the server (*STOP)

DEBUGMODE – Allow verbose messaging from the server often use for debug purposes.

1.1.1.1. Work with MI MSGQ

Use this command to display MessageIt server messages.

2.13.1.5. Clear MI MSGQ

Use this command to clear MessageIt message queue.

2.13.1.6. Display MI Log

Use this command to display transmission activity log.



Integration Tools and Software Solution

(List of all spool files that have been processed by MessageIt)

2.13.1.7. **Clear MI Log**

Use this command to clear transmission activity log.

(List of all spool files that have been processed by MessageIt)

2.13.1.8. **Display MI Waiting Files 4 Send**

Use this command to display the list of files waiting for transmission.

2.13.1.9. **initialize MI Servers**

Use this command to initialize the communication objects.

NOTE: using this command will reset all pending transmissions.

2.13.1.10. **Add Mail/Fax/SMS address to spool**

Use this command to add manually Mail, Fax, SMS TAG at the beginning of the spool file. This TAG will be used by MessageIt to determine the recipient address.

Maintenance Commands

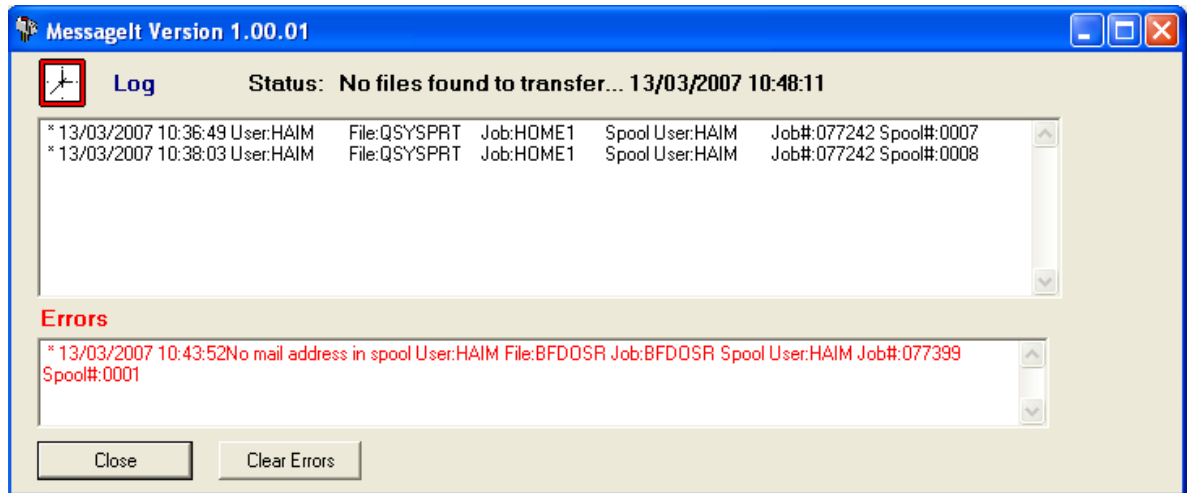
2.13.1.11. **Work with MI Global Parameters**

This option is currently not in use.



Integration Tools and Software Solution

MessageIt PC server



1. **Log** window displays spool files that were transferred successfully
2. **Error** window shows errors that occurred during the transferring
3. **Clear Errors** button clears Error window